

Formwork

Accessories

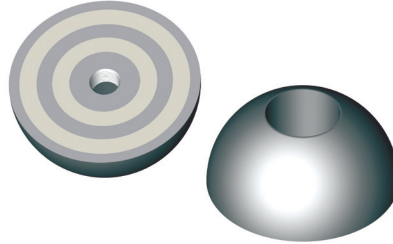


Magnetic System for Steel Formwork

KA Series

The KA Series magnet is machined from solid material and fitted with high performance magnets, providing a high power system for securing DR Anchors. The magnetic surface is sealed, protecting it against corrosion and damages.

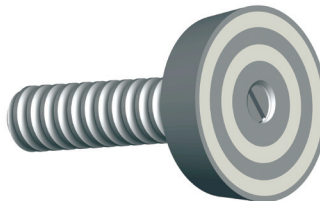
Requires use of rubber seals to stabilize anchor (see DR Anchor).



ITEM CODE	LOAD	DIMENSIONS
KA-13M	1 TON	2-3/8"
KA-25M	2 TON	3"
KA-50M	4 TON	3-7/8"
KA-75M	8 TON	4-3/4"

Magnetic Locator

Use for fixing coil or Ferrule inserts to steel forms.

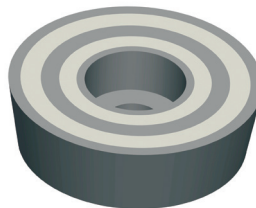


ITEM CODE	DIAMETER	THREAD TYPE
MLC05	1/2"	Coil
MLC75	3/4"	Coil
MLC10	1"	Coil
MLN05	1/2"	NC
MLN75	3/4"	NC
MLN10	1"	NC

Custom cut rod length.

R/Z Series

The R/Z – Series magnetic system was specifically designed to be fitted into reusable box-outs. Compared to other systems of its kind, the R/Z series is specially sealed to protect its magnetic side. This system is characterized by particularly high magnetic force.

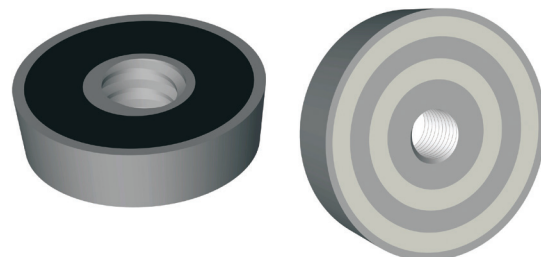


ITEM CODE	TENSION LOAD IN (LBS)	WIDTH	HEIGHT
R/Z-105	231	2"	9/16"

R/G Series

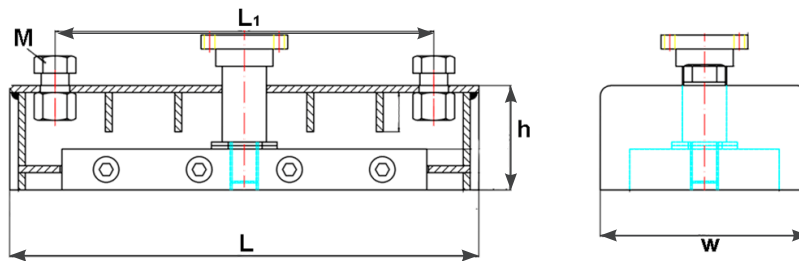
The R/G Magnetic system is designed to help with installing attachments to steel forms without drilling or bolting. Due to its high adhesion power and slender design, this magnet holds attachments on flat and vertical surfaces with confidence while taking up minimal space. These magnets come standard with metric threads from 10mm through 36mm. Standard NC thread combinations are also available.

ITEM CODE	TENSION LOAD IN (LBS)	DIAMETER	HEIGHT	THREAD
R/G-105	231	2-1/16"	9/16"	10mm-36mm
R/G-190	418	2-1/16"	9/16"	10mm-36mm



Push Button Form Magnets

The push button magnet is primarily used in side rails and blockouts but can be applied to a wide variety of forming scenarios including custom forms. This powerful internal magnet, available in a range of adhesion force capacities, can be applied to the steel form by pressing down on the centered button and is released from the steel by pulling up the same centered button, allowing for easy and convenient usage and long term reusability.



ITEM CODE	TENSION LOAD (LBS)	L	L1	H	W	M
PBM 500	1000	6-11/16"	5"	1-9/16"	2-3/8"	M16x25
PBM 1000	2000	11"	9-1/16"	1-9/16"	2-3/8"	M16x25
PBM 2100	4000	10-5/8"	8-9/16"	2-3/8"	4-3/4"	M16x25
PBM 2500	5000	12-9/16"	10-5/8"	2-3/8"	4-3/4"	M16x25

Magnetic Steel Chamfers

The reusable magnetic chamfer line use a steel construction with embedded N50 magnet strips. It is used to create a beveled edge on the corners or face of the precast product. They can be reused indefinitely as long as magnetization is maintained. The magnet keeps the steel fixed in position to ensure consistency in the final result.



ITEM CODE	MEASUREMENT "A"	LENGTH	PACKING FT/BDLE
MSC 20-S	3/4"	10 FT	200
MSC 25-S	1"	10 FT	200

Formlatch

Corner clamp for a variety of forms.



PART N.	SIZE
FORMLATCH BODY	15" Arm
FORMLATCH BALL	

Chamferfix

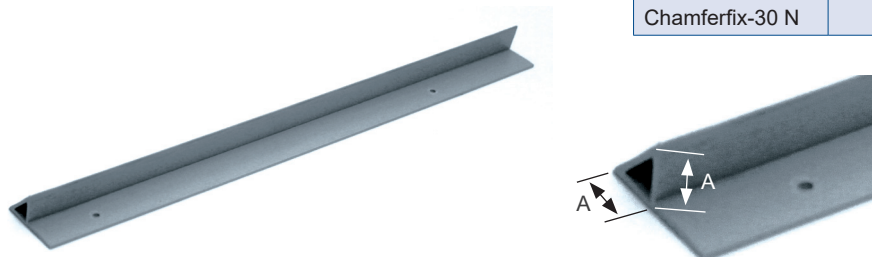
For forming chamfered edges to columns and beams, Chamferfix re-usable fillet is a thick-walled extrusion of impact-strength PVC.



REFERENCE	MEASUREMENT "A"	LENGTH	PACKING FT/BNDL
Chamferfix 6	1/4"	8.25 FT	330
Chamferfix 11	3/8"	8.25 FT	330
Chamferfix 15	5/8"	8.25 FT	330
Chamferfix 20	3/4"	8.25 FT	330
Chamferfix 25	1"	8.25 FT	165
Chamferfix 30	1 1/4"	8.25 FT	165

Chamferfix With Nailing Flange

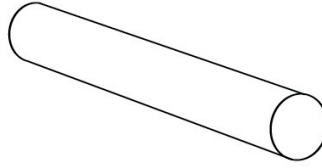
With nailing holes in the flange, this type of Chamferfix makes for easy fitting at corners of molds, and also safe stripping, which helps to achieve maximum reuse.



ITEM CODE	MEASUREMENT "A"	LENGTH	PACKING FT/BNDL
Chamferfix-11 N	3/8"	8.25 FT	330
Chamferfix-15 N	5/8"	8.25 FT	330
Chamferfix-20 N	3/4"	8.25 FT	330
Chamferfix-25 N	1"	8.25 FT	165
Chamferfix-30 N	1 1/4"	8.25 FT	165

De-Bond Sheathing

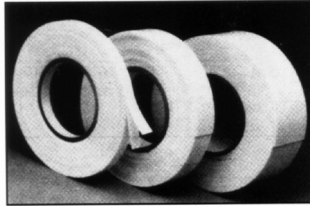
Flexible polymer plastic tubing for effective debonding of prestressed strands, available in 10' lengths for up to 9/16" strand.



ITEM CODE	SIZE	QTY/CTN.
DESHE	Slit Version	100 x 10'
DESHE	Unslit Version	100 x 10'

Double-Sided Tape

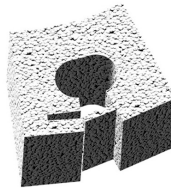
High tack and shear strength synthetic adhesive system ideal for attaching inserts and block-outs to forms. Our 1/16" tape is standard.



ORDER CODE	SIZE	QTY/CTN.
DST 05	1/2" x 1/16" x 108' Reel	18
DST 10	1" x 1/16" x 108' Reel	9
DST 20	2" x 1/16" x 108' Reel	5
DST 30	3" x 1/16" x 108' Reel	3
DST 40	4" x 1/16" x 108' Reel	3
DST 60	6" x 1/16" x 108' Reel	2

Strand Recesses

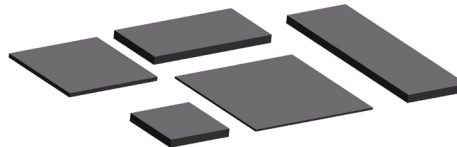
Foam plug designed to form an easily patched void at the ends of prestressed strands.



ITEM CODE	SIZE	QTY/CTN.
STREC	1-1/8"x1-1/8"x1"	5000

Standard Plastic Shims

High compressive (5,000-6,000 psi), high strength polymer plastic designed to level concrete members during erection. This product exhibits extreme stability while it prevents rust, stained concrete and spalling. It is also scored for convenience of application, and will not fracture under load. Custom sizes can be made to order.



ITEM CODE	SIZE	QTY/CTN.
SH 226	2"x2"x1/16"	2000
SH 228	2"x2"x1/8"	2000
SH 224	2"x2"x1/4"	1000
SH 336	3"x3"x1/16"	2000
SH 338	3"x3"x1/8"	2000
SH 334	3"x3"x1/4"	1000
SH 246	2"x4"x1/16"	2000
SH 248	2"x4"x1/8"	2000
SH 244	2"x4"x1/14"	1000
SH 446	4"x4"x1/16"	1000
SH 448	4"x4"x1/8"	1000
SH 444	4"x 4"x1/4"	500
SH 266	2"x 6"x1/16"	1000
SH 268	2"x 6"x1/8"	1000
SH 264	2"x 6"x1/4"	500

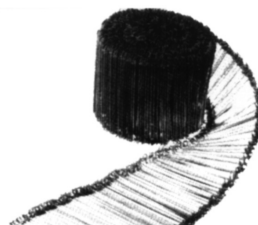
Shimpaks

Ideal for placing and leveling large load bearing panels, each shimpak is held together with a flexible band for quick and easy access. Other sizes available upon request.

ITEM CODE	SIZE	QTY/CTN.
SHP 33	3"x 3" x 1-1 1/16"	100
SHP 44	4"x 4" x 1-1 1/16"	100
SHP 46	4"x 6" x 1-1 1/16"	50

Rebar Tie Wire & Double Loop Ties

The most comprehensive line of wire products for the concrete construction industry, available in 4" - 16" long and packaged 5000 per roll. Available in plain, galvanized or PVC.



ITEM CODE	SIZE	QTY/CTN.
WT516B	5" - 16ga Blk Loop	5000
WT616B	6" - 16ga Blk Loop	5000
WT816B	8" - 16ga Blk Loop	5000
WT1016B	10" - 16ga Blk Loop	5000
WT1016Y	10" - 16ga PVC Coat	5000
WT1216B	12" - 16ga Blk Loop	5000
WT1616B	16" - 16ga Blk Loop	2500

Wire Tie Roll

For tying rebar manually. Rebar Tie Wire is available in either black annealed or 16 ga. Galvanized wire and comes in 20 3-1/2 lb. coils per carton. Made of black annealed wire.



ITEM CODE	SIZE	QTY/CTN.
WT16	16 Ga. 3-1/2 LB	20 pcs

